

February 2021

ISUS Newsletter

International School of Urban Sciences, University of Seoul

Cover Story

<2021 Spring Semester UOS Academic Schedule>

The Spring semester will start on **Tuesday, 2nd March**. In advance to the class, please check for the updates regarding schedule and announcement. **Class registration date** will be from **15th to 19th of February**, so please be preparing for enrolling classes.

<IUDP Student Interview for MIPD, MGLEP>

ISUS presented the **special series of interview** to capture the precious story of **ISUS members**. On 28th January, the interview was held via Zoom with the **representative student of MIPD 3rd, Sokkhim Dim, MGELP 5th, Can Xiao and MGELP 6th, Amador Olmedo Cardenas Modeno**.

<Lunar New Year Holiday >

From **11st to 14th** of February, there is a **national holiday** called '**Seollal**', which means **lunar New Year's Day**. On Seollal, Most Koreans go to their hometown to spend time with their families, but due to COVID-19, this culture would be changed this year.

<Social Distancing Level extended >

The **government extended** current social distancing **Level 2.5 from 18th of January to 14th of February**. Confirmed cases are slowly decreasing these days, but it is still around 300-400 cases every day, so all people should be careful wearing masks all the time.

Interview of ISUS student representatives

The ISUS presents the special series of interview to capture the precious story of ISUS members. Firstly, we invited the representatives of ISUS programs to an interview to capture the whole picture of ISUS vividly and share the experiences of the students.

On January 28th, the interview was held via Zoom with the representative student of MIPD 3rd, Sokkhim Dim, MGELP 5th, Can Xiao and MGELP 6th, Amador Olmedo CARDENAS MORENO.



Their interviews provided as below:

Q1. Introduce yourself and your motivation for taking ISUS programs.

Can: 您好. I am Can from Beijing, China. I am working as an urban planner at the China Academy of Urban planning and Design. I applied for the ISUS program to pursue sustainability of urban planning through adopting Korean highly advanced policy and technology.

Amador: Hola, ¿qué tal? I am Amador from Panama city, Panama. I am working as a project evaluator at Ministry of Environment. I decided to take his course to improve Panama's environmental policy.

Sokkhim Dim: ស្ម័គ្រ។ I am Sokkhim Dim from Siem Reap, Cambodia. As a tour leader & Volunteer Project Facilitator, I am working at Interpid Cambodia & New Era Cambodia. Recognizing the importance and necessity of infrastructure and development in Cambodia, I applied for this program to improve my knowledge and expertise so that I can contribute to the country's development.

Q2. Can you describe the ISUS program with one word?

Can: ISUS is "sharing".

I am learning the best development experiences of Korea and in the classes, diverse experiences and polices are shared among students from different countries. Based on this valuable experience, I will integrate what I learned with my country's situation to achieve a sustainability.

Amador: ISUS is "experience".

I am interested in the history of Korean environmental policies. I would like to adopt Korean experiences of establishing environmental policy in Panama, especially, the waste management policy. Even though it can be hard, I want to implement it in Panama because of its sustainability.

Sokkhim Dim: ISUS is "insightful".

Korea gives me very insightful knowledge on sustainable infrastructure development. Korean insightful principals and best practices are impressive. Special activities and seminars offered by ISUS inviting a lot of experts and professionals give students an insightful knowledge on a sustainable development.

Q3. What do you think the most impressive part of Seoul city?

Can: Seoul is famous for its artificial landscape. The key point of its landscape is related to the management of greenspace. Seoul has a lot of mountains and parks around them. I want to discover how Seoul has constructed the artificial landscape with maintaining the green space.

Amador: As Can said, it is easy to approach mountains in Seoul so people can enjoy hiking easily. And there are a lot of places where historical and modern places are harmonized. These two things made Seoul fascinating.

Sokkhim Dim: There are many parts I should mention about Seoul. Good transportation, special planning, and environmental aspect are impressive. Also, I would like to mention how well Seoul utilizes advanced technologies with deep consideration of natural environment.

Q4. Can you share your story of adapting to life in Korea?

Can: I literally adapted to Kimchi. At first, Kimchi was strange for me so I did barely touch it. However, when I tried the boiled kimchi in a Korean barbeque restaurant, I changed my mind. It was so delicious that I started to eat Kimchi.

Amador: It was quite hard for me to eat spicy food in Korea because there are few spicy foods in Latin America. So I did not like Kimchi at first, but now I enjoy eating Kimchi. Also, I adapted to using chopsticks. And I could read Korean and understand few words.

Sokkhim Dim: The most interesting part of Korean life is snow. In my country, we do not have snow. This is my first time to experience snow. But still, freezing cold weather is a little hard for me.

Q5. Due to the Covid-19, most of the activities and classes were online. How do you think about this?

Can: Having class via zoom is inevitable in this situation. But a little uncomfortable thing is that active debate in a class became difficult because of the characteristic of Zoom where simultaneous conversations are impossible. On the other hand, it can be a good circumstance for writing a thesis intensively.

Amador: I think online classes are challenging for both students and professors because we could not predict this situation before. If the condition is suitable, I recommend taking classes one week offline and the other week online.

Sokkhim Dim: Due to the advanced technology, we were able to choose the realistic and practical way, which is online class. I think we can consider this time to reflect ourselves and investigate more.

Q6. In what ways do you think his experience will affect the work in your country?

Can: I expect that I can integrate what I learned here with the real situation in Beijing because China and Korea share the similar cultural context. For example, waste management policy of Seoul is a useful model to follow.

Amador: I would like to improve environmental policy of Panama after I go back to my country. Especially, I hope to adopt Korean waste management policy in Panama.

Sokkhim Dim: Based on what I studied here, I will make an effort to enhance the environmental aspect in community infrastructure development and education programs.

Q7. Korea has a traditional holiday in February. It is Seollal, Korean New Year's Holiday. Can you introduce your country's national holiday?

Can: Actually, China has the same New Year's holiday like Seollal according to the lunar calendar. In China, families get together, have traditional foods and perform ancestral rites.

Amador: We do not have another traditional New Year's holiday except for January 1st. But we have some big holidays and one of them is 'Carnavales', which lasts four days full of parties from late February to early March. During this holiday, people wear traditional costumes and dance.

Sokkhim Dim: In Cambodia, according to the Buddhist calendar, we have Choul Chnam Thmey, Cambodian New Year's Holiday from April 14th to 16th. During the holiday, people spend time with families, have traditional foods, and conduct religious activities. Especially, we play various traditional games across the country and this is the New year's spirit in Cambodia.

New Year's Day Greeting from ISUS students

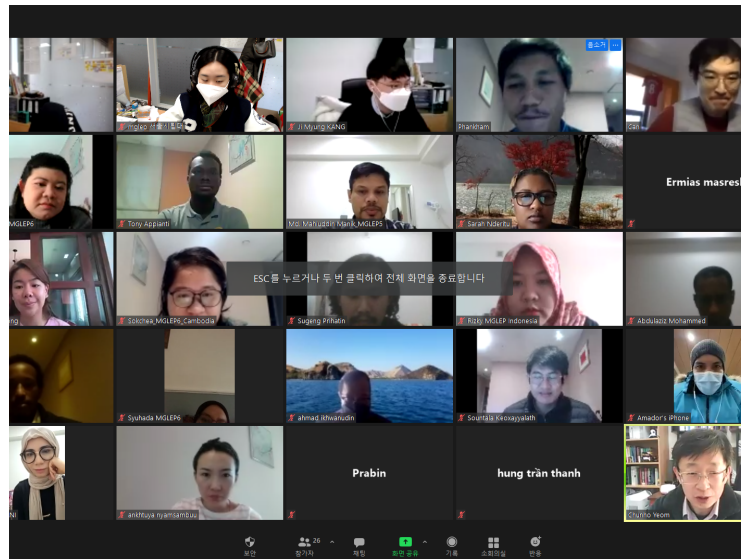
Can: 过年好.

Amador: Feliz año Nuevo.

Sokkhim Dim: Sour Sdey Chnam Thmey.

※Interview of ISUS student representatives (MUAP, MURD) will continue in the next month newsletter.

MGELP Semester End Meeting via Zoom

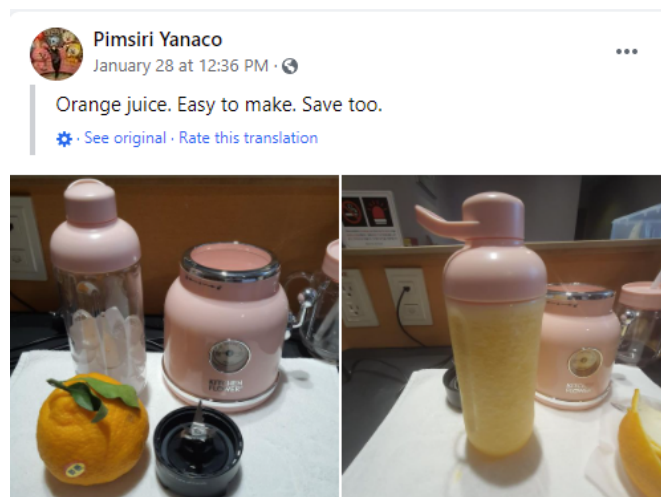


The Master of Global Leadership for Environmental Policy (MGLEP) batch 5th and 6th students were supposed to be hold their semester end meeting at the end of December right before Christmas. However due to the unexpected circumstance of UOS dormitory turning into COVID Intensive Care Unit Center, the meeting was postponed and was held on Jan. 27th.

MGLEP 5 elaborated their concerns about thesis, and batch 6 had questions regarding workshop and internships.

Prof Yeom mentioned that do not get gloomy because of the COVID19, and don't just stay in your room. With preparation of masks and other hygiene, go outside and explore Seoul.

After the meeting, ISUS had prepared a fruit gift box for everyone to say thanks for the cooperation of moving. Students were grateful with the fruit and enjoyed in many ways.



UOS Campus in February



Warm weather comes soon!



서울시립대학교
UNIVERSITY OF SEOUL

ISUS International School of Urban Sciences

서울시 동대문구 서울시립대로 163 (우:02504)

University of Seoul 163 Siripdaero, Dongdaemun-gu, Seoul 02504 KOREA

Tel 82-2-6490-5137~8 Fax 82-2-6490-5141 E-mail isus@uos.ac.kr Homepage <http://isus.uos.ac.kr>